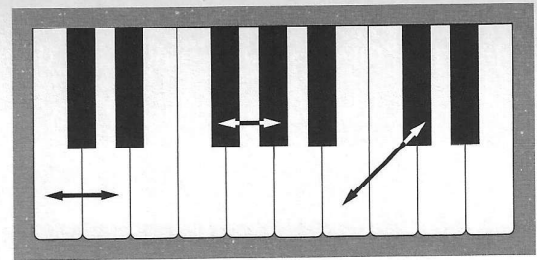


Whole Steps

A **whole step** is made up of 2 half steps.
Think of two keys with one key in between.

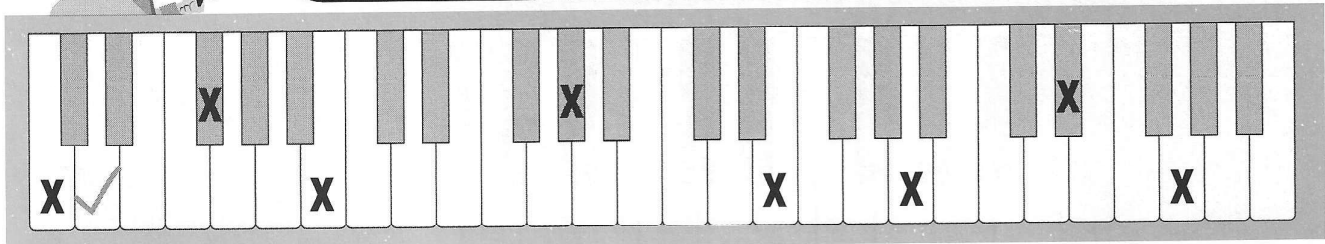


Detective "Whole Step"

1.



Put a ✓ on the key a **whole step higher** than the keys with an X.

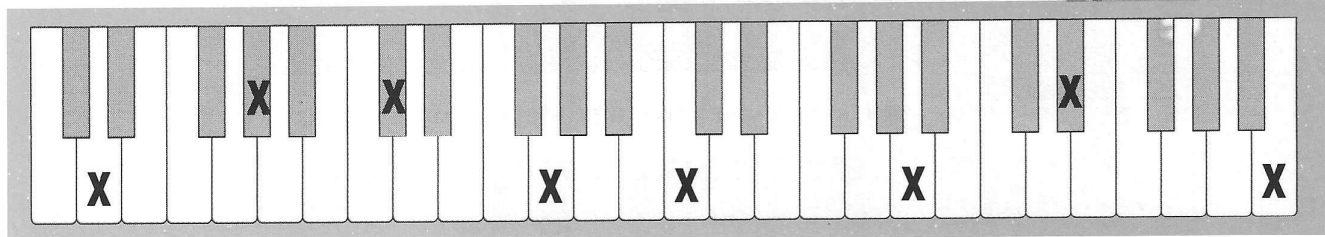


Ex.

Think!

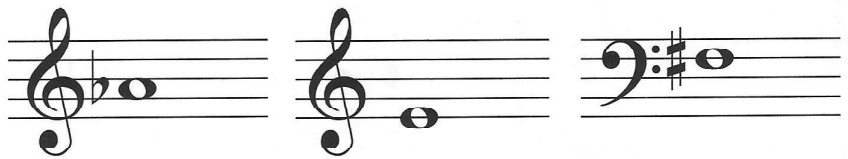
2.

Put a ✓ on the key a **whole step lower** than the keys with an X.



3.

Draw a **whole step higher** than the notes given.
Use a # or ♭ as needed.



4.



Draw a **whole step lower** than the notes given.
Use a # or ♭ as needed.

